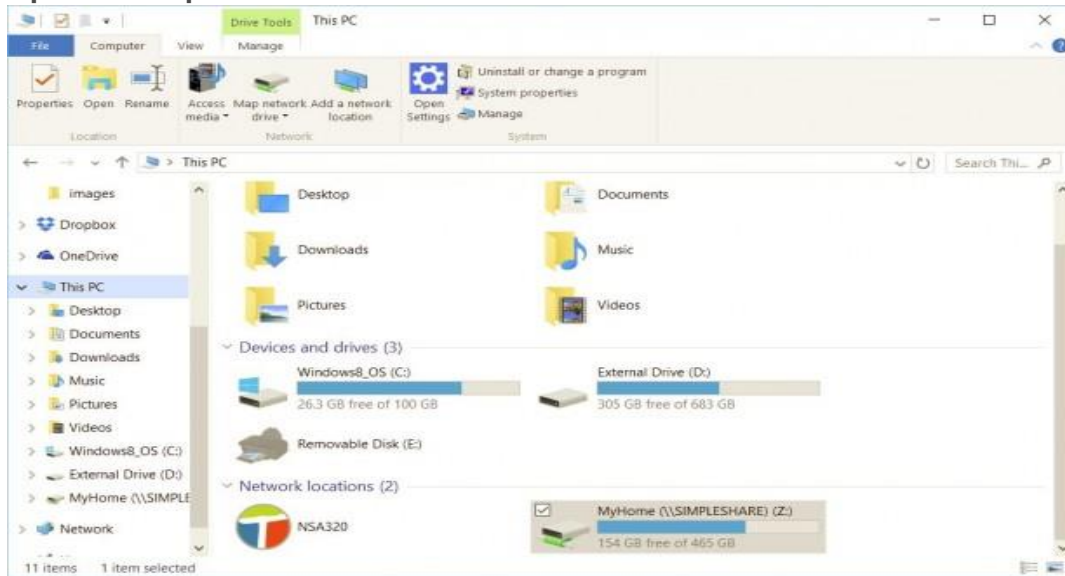
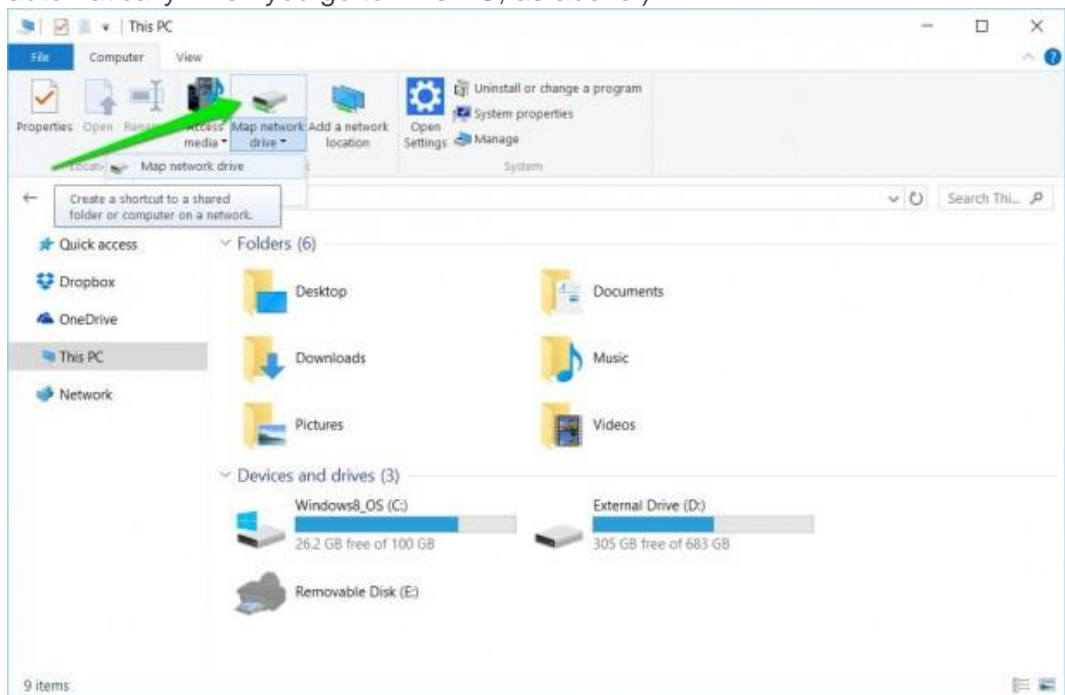


How to Map a Network Drive in Windows 10

1. Open File Explorer and select This PC.

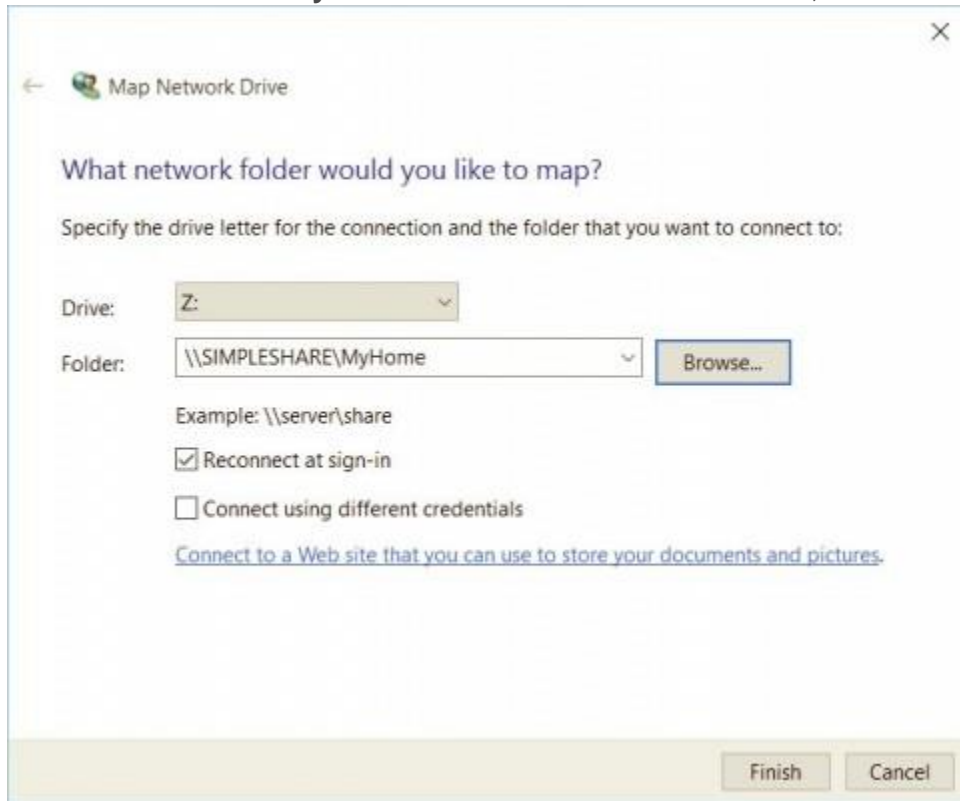


2. Click the Map network drive drop-down in the ribbon menu at the top, then select "Map network drive." (This is under the Computer tab, which should open automatically when you go to This PC, as above.)



How to Map a Network Drive in Windows 10

3. **Select the drive letter you want** to use for the network folder, then **hit Browse**.



NOTE: for Drive you need to select a letter from the drop down, the box for Folder you would need to type \\server\nameofsharedfolder

5. **Click Finish.** You can choose to reconnect at sign-in, this will have the drive mapped every time you sign in, so it's always available.